

BaseWall Multi WAN VPN Firewall

VPN 4000

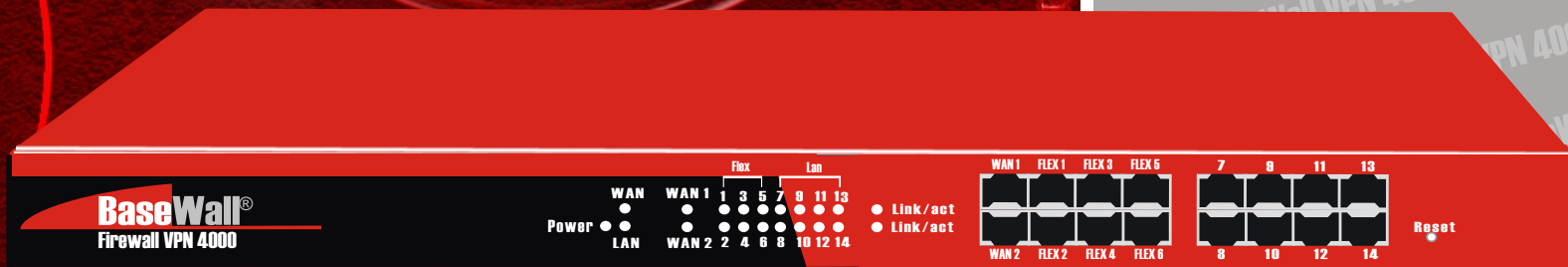
Business Class Internet Security

```
var message = window.status;  
window.status = message.substring(1) + message.substring(0,
```

```
function calcPrice(i)
```



↑ Insert your code ↓



```
if (document.order.qty[i].value == "")
```

```
alert("Please enter the quantity you require!");
```

BaseWall Multi WAN VPN Firewall

The BaseWall VPN 4000 Multi WAN feature is the perfect solution to boost your network speed. You can setup flexible 2 up to 8 WAN ports that allow you to connect to separate broadband connections (xDSL/Cable/T1) or use as back-up (ISP/VPN-Failover). The BaseWall VPN 4000 has a build in VPN IPsec & PPTP Gateway with up to 100 tunnels. The unique multiple WAN features of the VPN4000 can be used for mesh VPN connections. With its SPI Firewall and its unique features such as QoS, Dynamic DNS, 19inch rack mountable, Multiple IP's and DMZ, the VPN 4000 gives you the best return on your investment.



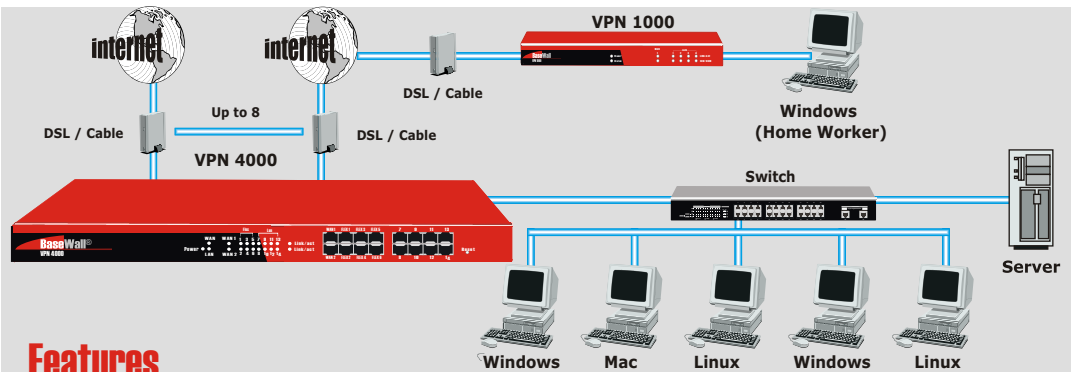
Business Class Internet Security

BaseWall®

BaseWall®

Business Class Internet Security

VPN 4000



Features

• Interfaces

- 16x 10/100 Ethernet Ports
- 6x Flex (lan/wan) Ports
- 2x WAN Ports (up to 8)
- 8x LAN Ports (up to 14)

• System Performance

- 90 MB (Max) Firewall Throughput
- 100.000 Concurrent Sessions
- 60 MB (Max) VPN Throughput
- Recommend 100 Users
- Policies

• Firewall Features

- SPI Firewall
- Anti DOS Attacks
- NAT
- PAT
- SNAT
- DMZ
- Multi DMZ(Max 32)
- Routing Mode (RIP v1, v2)
- UPnP
- QoS
- Access Filter
- ICMP Filter For WAN
- System Filter Exception
- Session Limit
- DNS Loopback

• VPN

- PPTP Server
- VPN Passthrough
- Dead Peer Detection
- Aggressive Mode
- IPSec
- Dedicated Tunnels (Max 100)
 - Encryption:
 - DES
 - 3DES
 - AES
 - Authentication
 - SHA
 - MD5

- Manual Key
- Autokey IKE
- IKE Certification Autentication

• Content Filtering

- URL/Keyword/Phrase Block (Max 50)

• Logging

- Logging To Remote Syslog Server
- SNMP
- Email Notification
- Internal Log Storage
- VPN Tunnel Monitor

• Networking

- Load Balancing
- Fail-over
- Transparent Mode
- IPSec Fail-over
- PPPoE Client (DSL Dail-Up Service)
- DHCP Client
- DHCP Server
- PPTP Client
- DynDNS
- MTU Changeable For WAN
- Security Groups
- NAT Status & Connection List
- SMTP Bind
- MAC Address Clone

• System Management

- Web User Interface (HTTPS)
- Remote Firmware Update
- Remote Config File Update

• Administration

- TFTP(Upgrades)
- System Software Rollback

• User authentication

- IP/MAC Adress Binding
- PPTP Server *
- Internal Database

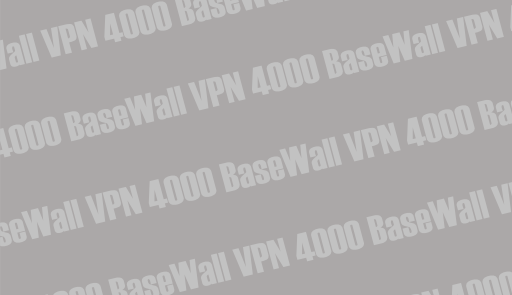
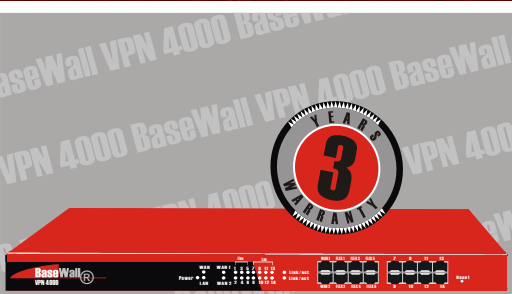
• Hardware

- Weight (KG) 1,5
- Dimension (W D H) CM 42,8x15,5x4,4
- 32 MB Memory
- 4mb Flash Rom
- Power 100-240 / 500Ma

• Regulation

- CE
- FCC CLASS B
- ISO 9001

*** To be implemented in the future**



www.BaseWall.com

Authorized Dealer